



M A N D R I N I

CHUCKS

SPANNFUTTER

MANDRINS

MANDRILES



0130

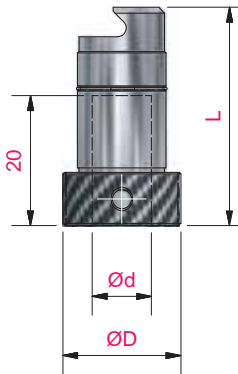
Mandrini porta punta per cambio rapido

Quick change drill holder

Schnellwechselfutter

Mandrin de réductions
pour mèches à tourillons

Mandriles para brocas
con cambio rapido



| Ød | ØD | L | DX - RH | SX - LH |
|----|----|----|------------|------------|
| 10 | 20 | 37 | 0130.100.R | 0130.100.L |
| 10 | 20 | 30 | 0130.101.R | 0130.101.L |

"BIESSE"

0131

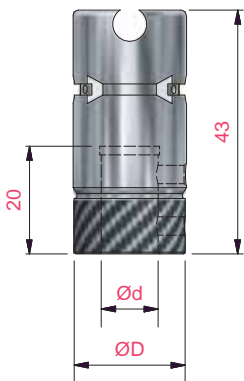
Mandrini porta punta per cambio rapido

Quick change drill holder

Schnellwechselfutter

Mandrin de réductions
pour mèches à tourillons

Mandriles para brocas
con cambio rapido



| Ød | ØD | DX - RH | SX - LH |
|-----|----|-----------------|-----------------|
| 10 | 20 | 0131.100.R | |
| 10 | 16 | 0131.101.R rib. | |
| M10 | 20 | 0131.102.R | 0131.102.L fil. |

"MORBIDELLI"

0131.500

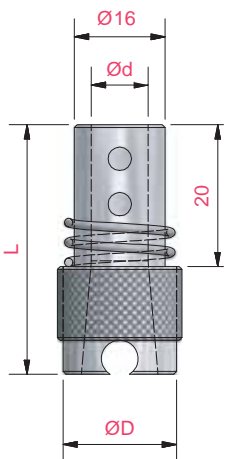
Mandrini porta punta per cambio rapido

Quick change drill holder

Schnellwechselfutter

Mandrin de réductions
pour mèches à tourillons

Mandriles para brocas
con cambio rapido



| Ød | ØD | L | Part Number |
|----|----|----|-------------|
| 10 | 20 | 44 | 0131.500 |

"MORBIDELLI"
con molla di estrazione

Mandrini porta punta per cambio rapido

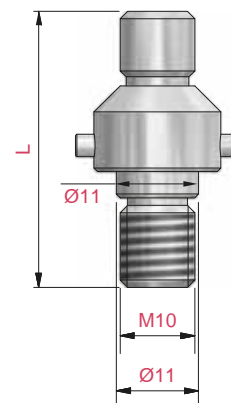
0131.600

| | | | |
|---------------------------|----------------------|--|---|
| Quick change drill holder | Schnellwechselfutter | Mandrin de réductions pour mèches à tourillons | Mandriles para brocas con cambio rapido |
|---------------------------|----------------------|--|---|

| L | DX - RH | SX - LH |
|----|------------|------------|
| 37 | 0131.600.R | 0131.600.L |

Adattatore per utilizzo di mandrini a cambio rapido per macchine MORBIDELLI - SCM con attacco filettato m10/11 si usa con art. 0131.100.r e/o art. 0131.500.R

Adapter to be used on MORBIDELLI - SCM machines with threaded shank drill holderes



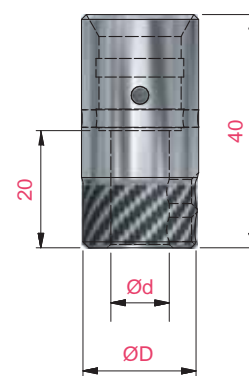
Mandrini porta punta per cambio rapido

0132

| | | | |
|---------------------------|----------------------|--|---|
| Quick change drill holder | Schnellwechselfutter | Mandrin de réductions pour mèches à tourillons | Mandriles para brocas con cambio rapido |
|---------------------------|----------------------|--|---|

| Ød | ØD | DX - RH |
|----|----|------------|
| 10 | 20 | 0132.100.R |

*"MASTERWOOD"
"MAGGI"
"GRIGGIO"*



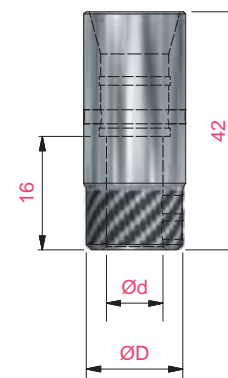
Mandrini porta punta per cambio rapido

0133

| | | | |
|---------------------------|----------------------|--|---|
| Quick change drill holder | Schnellwechselfutter | Mandrin de réductions pour mèches à tourillons | Mandriles para brocas con cambio rapido |
|---------------------------|----------------------|--|---|

| Ød | ØD | DX - RH |
|----|----|------------|
| 10 | 18 | 0133.100.R |

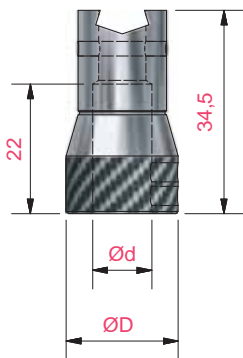
"VITAP"



0134**Mandrini porta punta per cambio rapido**

Quick change drill holder

Schnellwechselfutter

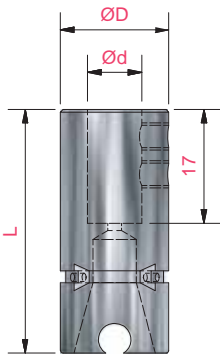
Mandrin de réductions
pour mèches à tourillonsMandriles para brocas
con cambio rapido

| $\varnothing d$ | $\varnothing D$ | DX - RH |
|-----------------|-----------------|------------|
| 10 | 19 | 0134.100.R |

*"BUSELLATO"***0135.100****Mandrini porta punta per cambio rapido**

Quick change drill holder

Schnellwechselfutter

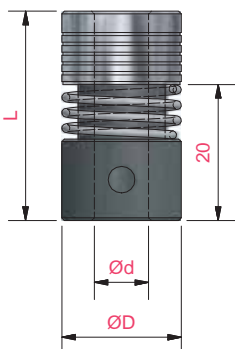
Mandrin de réductions
pour mèches à tourillonsMandriles para brocas
con cambio rapido

| $\varnothing d$ | $\varnothing D$ | L | Part Number |
|-----------------|-----------------|----|-------------|
| 10 | 20 | 45 | 0135.100.R |

*"DETEL"***0136.100****Mandrini porta punta per cambio rapido**

Quick change drill holder

Schnellwechselfutter

Mandrin de réductions
pour mèches à tourillonsMandriles para brocas
con cambio rapido

| $\varnothing d$ | $\varnothing D$ | L | Part Number |
|-----------------|-----------------|------|-------------|
| 10 | 22 | 38,5 | 0136.100.R |

"GRASS"

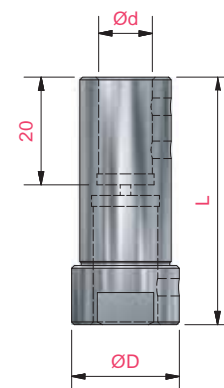
Mandrini porta punta per cambio rapido

0140

Quick change drill holder | Schnellwechselfutter | Mandrin de réductions pour mèches à tourillons | Mandriles para brocas con cambio rapido

| Ød | ØD | L | DX - RH |
|----|----|----|------------|
| 10 | 20 | 46 | 0140.100.R |
| 10 | 20 | 56 | 0140.101.R |
| 10 | 20 | 66 | 0140.102.R |

"WEEKE"



Mandrini porta punta per cambio rapido

0150

Quick change drill holder | Schnellwechselfutter | Mandrin de réductions pour mèches à tourillons | Mandriles para brocas con cambio rapido

| Ød | ØD | XL | Part Number |
|----|----|------|-------------|
| 10 | 18 | 17,5 | 0150.100.N |

vite di fissaggio: 1V.011



Mandrini porta punta per cambio rapido

0151

Quick change drill holder | Schnellwechselfutter | Mandrin de réductions pour mèches à tourillons | Mandriles para brocas con cambio rapido

| Ød | ØD | DX - RH | SX - LH |
|----|----|------------|------------|
| 14 | 18 | 0151.100.R | 0151.100.L |

"AYEN"
"HOLZMA"



0152**Mandri porta punta per cambio rapido**

Quick change drill holder

Schnellwechselfutter

Mandrin de réductions
pour mèches à tourillonsMandriles para brocas
con cambio rapido

| L | DX - RH | SX - LH |
|------|------------|------------|
| 22,5 | 0152.100.R | 0152.100.L |

"MORBIDELLI"
"BIESSE"
"WEEKE"
"BUSELLATO"
"TORWEGGE"

0153**Mandri porta punta per cambio rapido**

Quick change drill holder

Schnellwechselfutter

Mandrin de réductions
pour mèches à tourillonsMandriles para brocas
con cambio rapido

| L | DX - RH | SX - LH |
|------|------------|------------|
| 22,5 | 0153.100.R | 0153.100.L |

"VITAP"
"ALBERTI"

0154**Mandri porta punta per cambio rapido**

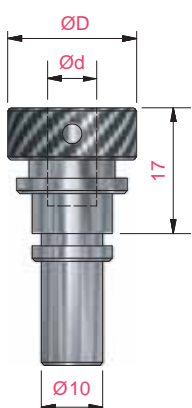
Quick change drill holder

Schnellwechselfutter

Mandrin de réductions
pour mèches à tourillonsMandriles para brocas
con cambio rapido

| Ød | ØD | DX - RH | SX - LH |
|----|----|------------|------------|
| 14 | 18 | 0154.100.R | 0154.100.L |

"NOTTMEYER"

0160.100.N**Mandri per cambio automatico "BIESSE"**

Quick change drill holder

Schnellwechselfutter

Mandrin de réductions
pour mèches à tourillonsMandriles para brocas
con cambio rapido

| Ød | ØD | L | Part Number |
|----|----|----|-------------|
| 10 | 21 | 42 | 0160.100.N |

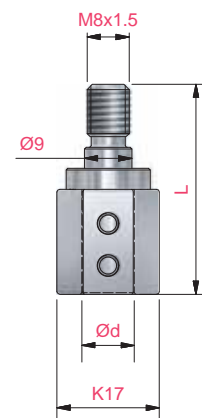
"BIESSE"

Mandrini per punta componibile

0012

| Drill Holder | Spannfutter | Mandrins pour mèches à élément | Portabrocas |
|--------------|-------------|--------------------------------|-------------|
|--------------|-------------|--------------------------------|-------------|

| Ød | L | DX - RH | SX - LH |
|----|----|------------|------------|
| 8 | 40 | 0012.080.R | 0012.080.L |
| 10 | 40 | 0012.100.R | 0012.100.L |

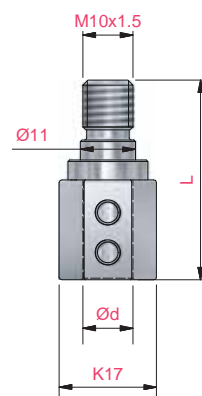


Mandrini per punta componibile

0013

| Drill Holder | Spannfutter | Mandrins pour mèches à élément | Portabrocas |
|--------------|-------------|--------------------------------|-------------|
|--------------|-------------|--------------------------------|-------------|

| Ød | L | DX - RH | SX - LH |
|----|----|------------|------------|
| 8 | 40 | 0013.080.R | 0013.080.L |
| 10 | 40 | 0013.100.R | 0013.100.L |

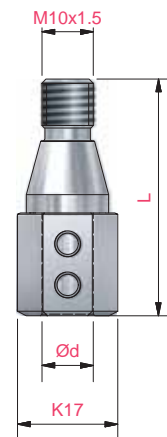


Mandrini per punta componibile

0014

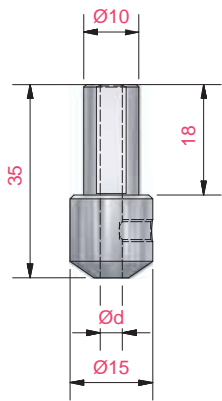
| Drill Holder | Spannfutter | Mandrins pour mèches à élément | Portabrocas |
|--------------|-------------|--------------------------------|-------------|
|--------------|-------------|--------------------------------|-------------|

| Ød | L | DX - RH | SX - LH |
|----|----|------------|------------|
| 8 | 46 | 0014.080.R | 0014.080.L |
| 10 | 46 | 0014.100.R | 0014.100.L |



0010

Bussole e riduzioni per punte integrali

Bushing and chucks for
jobber drillsAufnahmen für
spiralbohrerMandrins pour mèches
à percer

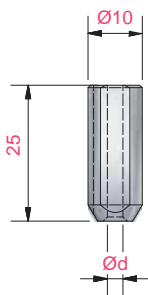
Portabrocas

| Ød | Part Number |
|-----|-------------|
| 2 | 0010.020 |
| 2.5 | 0010.025 |
| 3 | 0010.030 |
| 3.2 | 0010.032 |
| 3.5 | 0010.035 |
| 4 | 0010.040 |
| 5 | 0010.050 |



0011

Bussole e riduzioni per punte integrali

Bushing and chucks for
jobber drillsAufnahmen für
spiralbohrerMandrins pour mèches
à percer

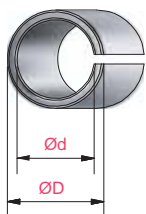
Portabrocas

| Ød | Part Number |
|-----|-------------|
| 2 | 0011.020 |
| 2.5 | 0011.025 |
| 3 | 0011.030 |
| 3.2 | 0011.032 |
| 3.5 | 0011.035 |
| 4 | 0011.040 |
| 5 | 0011.050 |



0008

Mandrini



Chucks

Spannfutter

Mandrins

Mandriles

| Ød | ØD | L | Part Number |
|------|------|---|-------------|
| 6 | 8 | | 0008.001 |
| 6 | 9,5 | | 0008.002 |
| 6 | 10 | | 0008.003 |
| 6 | 12 | | 0008.004 |
| 6,35 | 12,7 | | 0008.005 |
| 8 | 9,5 | | 0008.006 |
| 8 | 10 | | 0008.007 |
| 8 | 12 | | 0008.008 |
| 9,5 | 12 | | 0008.009 |
| 10 | 12 | | 0008.010 |

Mandrino CNC MK2

0080

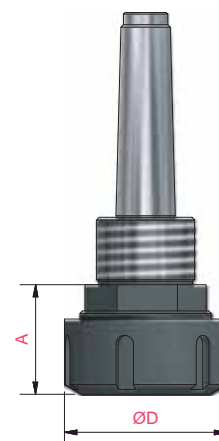
Chucks

Spannfutter

Mandrins

Mandriles

| Rot | Cono Taper | ØD | A | Pinza/Collet | Ghiera/Nut | Part Number |
|-------|---------------|----|----|-----------------------|-------------------------------|-------------|
| DX-RH | C.M.2/FIL M20 | 50 | 85 | Ø2÷20 (ER32) (0070) | Din 6499 (0077.001.R) | 0080.100.R |
| DX-RH | C.M.2/FIL M30 | 50 | 70 | Ø2÷20 (ER32) (0070) | Din 6499 (0077.001.R) | 0080.200.R |
| SX-LH | C.M.2/FIL M30 | 50 | 70 | Ø2÷20 (ER32) (0070) | Din 6499 (0077.001.L) | 0080.200.L |
| DX-RH | C.M.2/FIL M30 | 50 | 70 | Ø2÷20 (ER32) (0070) | Din 6499 (0077.101.R) c/cusc. | 0080.202.R |
| DX-RH | C.M.3/FIL M30 | 50 | 70 | Ø2÷20 (ER32) (0070) | Din 6499 (0077.001.R) | 0080.300.R |
| SX-LH | C.M.3/FIL M30 | 50 | 70 | Ø2÷20 (ER32) (0070) | Din 6499 (0077.001.L) | 0080.300.L |
| DX-RH | C.M.3/FIL M30 | 50 | 70 | Ø2÷20 (ER32) (0070) | Din 6499 (0077.101.R) c/cusc. | 0080.302.R |



Mandrino CNC attacco Ø 20 / Ø 25

0080

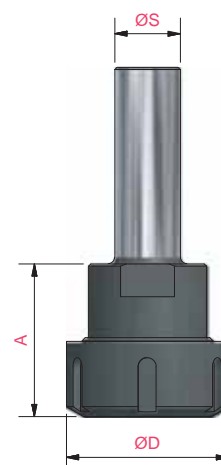
Chucks

Spannfutter

Mandrins

Mandriles

| Rot | ØD | ØS | Pinza/Collet | Ghiera/Nut | Part Number |
|-------|----|----|---------------------|------------------------------------|-------------|
| DX-RH | 50 | 20 | Ø2÷20 (ER32) (0070) | Din 6499 (0077.001.R) | 0080.400.R |
| DX-RH | 50 | 20 | Ø2÷20 (ER32) (0070) | Din 6499 (0077.101.R) c/cuscinetto | 0080.402.R |
| DX-RH | 50 | 25 | Ø2÷20 (ER32) (0070) | Din 6499 (0077.001.R) | 0080.600.R |
| DX-RH | 50 | 25 | Ø2÷20 (ER32) (0070) | Din 6499 (0077.101.R) c/cuscinetto | 0080.602.R |



Viene fornito completo di ghiera (senza pinza)
o con ghiera antisvitamento (con cuscinetto)

Chuck prices include pull stud

Mandrino CNC Attacco ISO 30 Flangia Conica

0080

Chucks

Spannfutter

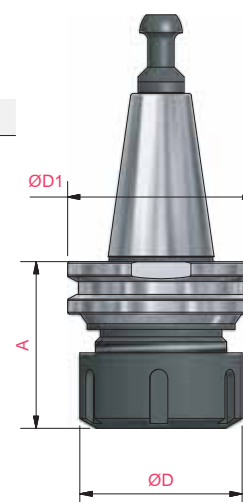
Mandrins

Mandriles

| Rot | ØD | ØD1 | A | Pinza/Collet | Ghiera/Nut | Part Number |
|-------|----|-----|----|------------------------|-----------------------|-------------|
| DX-RH | 50 | 57 | 58 | Ø2÷20(ER32) (0070) | Din 6499 (0077.001.R) | 0080.680.R |

Viene fornito completo di ghiera e tirante (senza pinza)
Tirante 0081.891 per macchine "THERMWOOD"

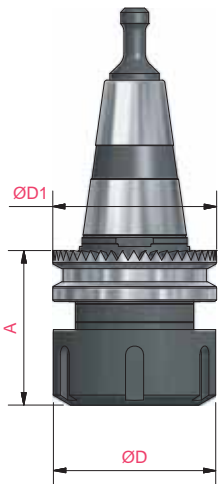
Chuck prices include pull stud
Pull stud 0081.891 for "THERMWOOD"



10

0080

Mandrino CNC Attacco ISO 30 - Flangia Dentata



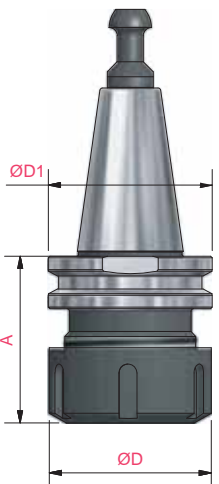
| Chucks | | Spannfutter | | Mandrins | | Mandriles | |
|--------|----|-------------|----|-----------------------|-------------------------------|-------------|--|
| Rot | ØD | ØD1 | A | Pinza/Collet | Ghiera/Nut | Part Number | |
| DX-RH | 50 | 49 | 55 | Ø2÷20 (ER32) (0070) | DIN 6499 (0077.001.R) | 0080.700.R | |
| DX-RH | 50 | 49 | 55 | Ø2÷20 (ER32) (0070) | DIN 6499 (0077.101.R) c/cusc. | 0080.702.R | |
| DX-RH | 60 | 49 | 71 | Ø3÷25 (EOC 25) (0072) | DIN 6499 (0077.202.R) | 0080.701.R | |
| DX-RH | 60 | 49 | 71 | Ø3÷25 (EOC 25) (0072) | DIN 6499 (0077.203.R) c/cusc. | 0080.711.R | |

Viene fornito completo di ghiera e tirante (senza pinza)
o con ghiera antisvitamento (con cuscinetto)
Chuck prices include pull stud

Tirante 0081.790 per macchine "MORBIDELLI - SCM"
Pull stud 0081.790 for "MORBIDELLI - SCM"

0080

Mandrino CNC Attacco ISO 30



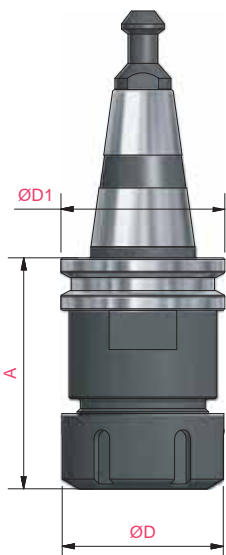
| Chucks | | Spannfutter | | Mandrins | | Mandriles | |
|--------|----|-------------|----|---------------------|-------------------------------|-------------|--|
| Rot | ØD | ØD1 | A | Pinza/Collet | Ghiera/Nut | Part Number | |
| DX-RH | 50 | 50 | 50 | Ø2÷20 (ER32) (0070) | DIN 6499 (0077.001.R) | 0080.800.R | |
| SX-LH | 50 | 50 | 50 | Ø2÷20 (ER32) (0070) | DIN 6499 (0077.001.L) | 0080.800.L | |
| DX-RH | 50 | 50 | 50 | Ø2÷20 (ER32) (0070) | DIN 6499 (0077.101.R) c/cusc. | 0080.802.R | |
| DX-RH | 63 | 50 | 60 | Ø2÷30 (ER40) (0071) | DIN 6499 (0077.002.R) | 0080.830.R | |
| SX-LH | 63 | 50 | 60 | Ø2÷30 (ER40) (0071) | DIN 6499 (0077.002.L) | 0080.830.L | |
| DX-RH | 63 | 50 | 60 | Ø2÷30 (ER40) (0071) | DIN 6499 (0077.102.R) c/cusc. | 0080.832.R | |

Viene fornito completo di ghiera e tirante (senza pinza) o con ghiera antisvitamento (con cuscinetto)
Chuck prices include pull stud

Tirante 0081.791 per macchine : BIESSE (dopo il 09/09/92) MASTERWOOD - BULLERI (Motori H.S.D.)
Pull stud 0081.791 for : BIESSE (after 09/09/92) MASTERWOOD - BULLERI (Motori H.S.D.)

0080

Mandrino CNC Attacco ISO 30 - Tipo Prolungato



| Chucks | | Spannfutter | | Mandrins | | Mandriles | |
|--------|----|-------------|----|---------------------|-------------------------------|-------------|--|
| Rot | ØD | ØD1 | A | Pinza/Collet | Ghiera/Nut | Part Number | |
| DX-RH | 50 | 50 | 68 | Ø2÷20 (ER32) (0070) | DIN 6499 (0077.001.R) | 0080.804.R | |
| SX-LH | 50 | 50 | 68 | Ø2÷20 (ER32) (0070) | DIN 6499 (0077.001.L) | 0080.804.L | |
| DX-RH | 50 | 50 | 68 | Ø2÷20 (ER32) (0070) | DIN 6499 (0077.101.R) c/cusc. | 0080.806.R | |
| DX-RH | 63 | 50 | 68 | Ø2÷30 (ER40) (0071) | DIN 6499 (0077.002.R) | 0080.834.R | |
| SX-LH | 63 | 50 | 68 | Ø2÷30 (ER40) (0071) | DIN 6499 (0077.002.L) | 0080.834.L | |
| DX-RH | 63 | 50 | 68 | Ø2÷30 (ER40) (0071) | DIN 6499 (0077.102.R) c/cusc. | 0080.836.R | |

Viene fornito completo di ghiera e tirante (senza pinza) o con ghiera antisvitamento (con cuscinetto)
Chuck prices include pull stud

Tirante 0081.791 per macchine : BIESSE (dopo il 09/09/92) MASTERWOOD - BULLERI (Motori H.S.D.)
Pull stud 0081.791 for : BIESSE (after 09/09/92) MASTERWOOD - BULLERI (Motori H.S.D.)

Chucks

Spannfutter

Mandrins

Mandriles

Tirante 0081.792 per macchine : ALBERTI - VITAP - MASTERWOOD (Motori G. Colombo)

Pull stud 0081.792 for : ALBERTI - VITAP - MASTERWOOD (Motors G. Colombo)

| Rot | ØD | ØD1 | A | Pinza/Collet | Ghiera/Nut | Part Number |
|-------|----|-----|----|---------------------|-------------------------------|--------------|
| DX-RH | 50 | 50 | 68 | Ø2÷20 (ER32) (0070) | DIN 6499 (0077.001.R) | 0080.810.R |
| LX-SH | 50 | 50 | 68 | Ø2÷20 (ER32) (0070) | DIN 6499 (0077.001.L) | 0080.810.L |
| DX-RH | 50 | 50 | 68 | Ø2÷20 (ER32) (0070) | DIN 6499 (0077.101.R) c/cusc. | 0080.812.R * |

| | | | | | | |
|-------|----|----|----|---------------------|-------------------------------|--------------|
| DX-RH | 63 | 50 | 68 | Ø2÷30 (ER40) (0071) | DIN 6499 (0077.002.R) | 0080.814.R |
| LX-SH | 63 | 50 | 68 | Ø2÷30 (ER40) (0071) | DIN 6499 (0077.002.L) | 0080.814.L |
| DX-RH | 63 | 50 | 68 | Ø2÷30 (ER40) (0071) | DIN 6499 (0077.102.R) c/cusc. | 0080.816.R * |

Tirante 0081.791 per macchine : BUSELLATO - WEEKE - IMA - MAKA - COSMEC - REICHENBACHER

Pull stud 0081.791 for : BUSELLATO - WEEKE - IMA - MAKA - COSMEC - REICHENBACHER

| | | | | | | |
|-------|----|----|----|---------------------|-------------------------------|--------------|
| DX-RH | 50 | 50 | 68 | Ø2÷20 (ER32) (0070) | DIN 6499 (0077.001.R) | 0080.820.R |
| LX-SH | 50 | 50 | 68 | Ø2÷20 (ER32) (0070) | DIN 6499 (0077.001.L) | 0080.820.L |
| DX-RH | 50 | 50 | 68 | Ø2÷20 (ER32) (0070) | DIN 6499 (0077.101.R) c/cusc. | 0080.822.R * |

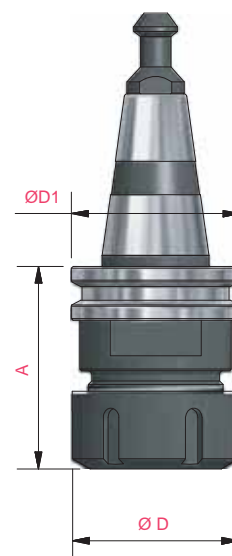
| | | | | | | |
|-------|----|----|----|---------------------|-------------------------------|------------|
| DX-RH | 63 | 50 | 68 | Ø2÷30 (ER40) (0071) | DIN 6499 (0077.002.R) | 0080.824.R |
| LX-SH | 63 | 50 | 68 | Ø2÷30 (ER40) (0071) | DIN 6499 (0077.002.L) | 0080.824.L |
| DX-RH | 63 | 50 | 68 | Ø2÷30 (ER40) (0071) | DIN 6499 (0077.102.R) c/cusc. | 0080.826.R |

Tirante 0081.794 per macchine : CMS - Flangia Ø 46

Pull stud 0081.794 for : CMS - Flangia Ø 46

| | | | | | | |
|-------|----|----|----|----------------------|-----------------------|------------|
| DX-RH | 50 | 46 | 52 | Ø3÷20 (ETS32) (0073) | DIN 6499 (0077.301.R) | 0080.880.R |
| DX-RH | 50 | 46 | 52 | Ø3÷20 (ER32) (0070) | DIN 6499 (0077.001.R) | 0080.881.R |
| DX-RH | 63 | 46 | 52 | Ø4÷25 (ETS40) (0074) | DIN 6499 (0077.302.R) | 0080.882.R |
| DX-RH | 63 | 46 | 52 | Ø4÷25 (ER40) (0071) | DIN 6499 (0077.002.R) | 0080.883.R |

Viene fornito completo di ghiera e tirante (senza pinza) o con ghiera antisvitamento (con cuscinetto)
Chuck prices include pull stud



* lock nut bearing

Mandrino CNC Attacco ISO 30

0080

Chucks

Spannfutter

Mandrins

Mandriles

Tirante 0081.791 per macchine : BUSELLATO - WEEKE - IMA - MAKA - COSMEC - REICHENBACHER

Pull stud 0081.791 for : BUSELLATO - WEEKE - IMA - MAKA - COSMEC - REICHENBACHER

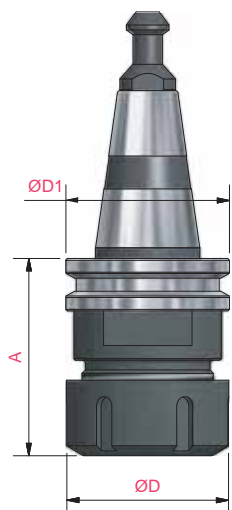
| Rot | ØD | ØD1 | A | Pinza/Collet | Ghiera/Nut | Part Number |
|-------|----|-----|----|----------------------|-------------------------------|--------------|
| DX-RH | 60 | 50 | 68 | Ø3÷25 (EOC25) (0072) | DIN 6499 (0077.202.R) | 0080.828.R |
| DX-RH | 60 | 50 | 68 | Ø3÷25 (EOC25) (0072) | DIN 6499 (0077.203.R) c/cusc. | 0080.829.R * |

Tirante 0081.791 per macchine : BIESSE (dopo il 09/09/92) MASTERWOOD - BULLERI (Motori H.S.D.)

Pull stud 0081.791 for : BIESSE (after 09/09/92) MASTERWOOD - BULLERI (Motors H.S.D.)

| | | | | | | |
|-------|----|----|----|----------------------|-------------------------------|--------------|
| DX-RH | 60 | 50 | 68 | Ø3÷25 (EOC25) (0072) | DIN 6499 (0077.202.R) | 0080.838.R |
| DX-RH | 60 | 50 | 68 | Ø3÷25 (EOC25) (0072) | DIN 6499 (0077.203.R) c/cusc. | 0080.839.R * |

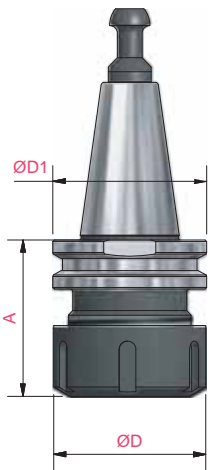
Viene fornito completo di ghiera e tirante (senza pinza) o con ghiera antisvitamento (con cuscinetto)
Chuck prices include pull stud



* lock nut bearing

0080

Mandrino CNC Attacco ISO 30



Chucks

Spannfutter

Mandrins

Mandriles

Tirante 0081.791 per ELETTRMANDRINI ELTE - Pull stud 0081.791 for ELETTRMANDRINI ELTE

| Rot | ØD | ØD1 | A | Pinza/Collet | Ghiera/Nut | Part Number |
|-------|----|-----|----|---------------------|-------------------------------|-------------|
| DX-RH | 50 | 58 | 50 | Ø2÷20 (ER32) (0070) | DIN 6499 (0077.001.R) | 0080.845.R |
| DX-RH | 50 | 58 | 50 | Ø2÷20 (ER32) (0070) | DIN 6499 (0077.101.R) c/cusc. | 0080.846.R* |
| DX-RH | 63 | 58 | 56 | Ø2÷30 (ER40) (0071) | DIN 6499 (0077.002.R) | 0080.847.R |
| DX-RH | 63 | 58 | 56 | Ø2÷30 (ER40) (0071) | DIN 6499 (0077.102.R) c/cusc. | 0080.848.R* |

Tirante 0081.793 per macchine ESSETEAM (Flangia non fresata) - Pull stud 0081.793 for ESSETEAM

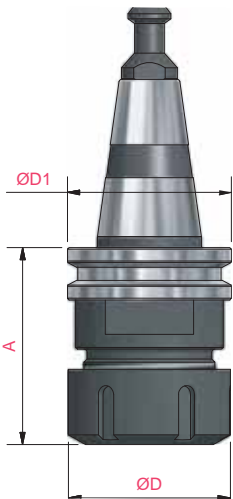
| | | | | | | |
|-------|----|----|----|---------------------|-------------------------------|-------------|
| DX-RH | 50 | 58 | 50 | Ø2÷20 (ER32) (0070) | DIN 6499 (0077.001.R) | 0080.861.R |
| DX-RH | 50 | 58 | 50 | Ø2÷20 (ER32) (0070) | DIN 6499 (0077.101.R) c/cusc. | 0080.862.R* |
| DX-RH | 63 | 58 | 56 | Ø2÷30 (ER40) (0071) | DIN 6499 (0077.002.R) | 0080.864.R |
| DX-RH | 63 | 58 | 56 | Ø2÷30 (ER40) (0071) | DIN 6499 (0077.102.R) c/cusc. | 0080.866.R* |

* lock nut bearing

*Viene fornito completo di ghiera e tirante (senza pinza) o con ghiera antisvitamento (con cuscinetto)
Chuck prices include pull stud*

0080

Mandrino CNC Attacco ISO 40



Chucks

Spannfutter

Mandrins

Mandriles

| Rot | ØD | ØD1 | A | Pinza/Collet | Ghiera/Nut | Part Number |
|-------|----|------|----|---------------------|-------------------------------|-------------|
| DX-RH | 50 | 63,5 | 73 | Ø2÷20 (ER32) (0070) | DIN 6499 (0077.001.R) | 0080.850.R |
| DX-RH | 50 | 63,5 | 73 | Ø2÷20 (ER32) (0070) | DIN 6499 (0077.101.R) c/cusc. | 0080.852.R* |
| DX-RH | 63 | 63,5 | 73 | Ø2÷30 (ER40) (0071) | DIN 6499 (0077.002.R) | 0080.870.R |
| DX-RH | 63 | 63,5 | 73 | Ø2÷30 (ER40) (0071) | DIN 6499 (0077.102.R) c/cusc. | 0080.872.R* |

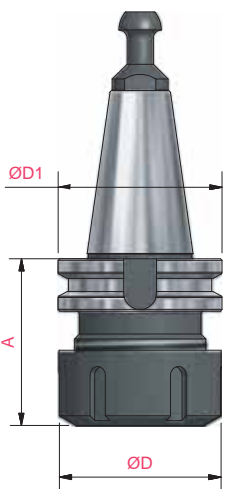
*Viene fornito completo di ghiera e tirante (senza pinza) o con ghiera antisvitamento (con cuscinetto)
Chuck prices include pull stud*

*Tirante 0081.893 per macchine : WEEKE - IMA - MAKA - REICHENBACHER - STREGHERR
Pull stud 0081.893 for : WEEKE - IMA - MAKA - REICHENBACHER - STREGHERR*

* lock nut bearing

0080

Mandrino CNC Cono BT30 - BT35 - BT40



Chucks

Spannfutter

Mandrins

Mandriles

| Rot | Tipo | ØD | ØD1 | A | Pinza/Collet | Ghiera/Nut | Part Number |
|-------|------|----|-----|----|---------------------|-------------------------------|-------------|
| DX-RH | BT30 | 50 | 46 | 60 | Ø2÷20 (ER32) (0070) | DIN 6499 (0077.101.R) c/cusc. | 0080.910.R* |
| DX-RH | BT30 | 63 | 46 | 70 | Ø2÷30 (ER40) (0071) | DIN 6499 (0077.102.R) c/cusc. | 0080.912.R* |
| DX-RH | BT35 | 50 | 53 | 69 | Ø2÷20 (ER32) (0070) | DIN 6499 (0077.101.R) c/cusc. | 0080.920.R* |
| DX-RH | BT35 | 63 | 53 | 60 | Ø2÷30 (ER40) (0071) | DIN 6499 (0077.102.R) c/cusc. | 0080.922.R* |
| DX-RH | BT40 | 50 | 63 | 65 | Ø2÷20 (ER32) (0070) | DIN 6499 (0077.101.R) c/cusc. | 0080.930.R* |

*Viene fornito completo di ghiera e tirante (senza pinza) o con ghiera antisvitamento (con cuscinetto)
Chuck prices include pull stud*

Tirante 0081.895 per macchine : BT30 SHODA - Pull stud 0081.895 for : BT30 SHODA

Tirante 0081.896 per macchine : BT35 HEIAN - Pull stud 0081.896 for : BT35 HEIAN

Tirante 0081.897 per macchine : BT40 SHODA - Pull stud 0081.897 for : BT40 SHODA

* lock nut bearing

Mandrino CNC Cono HSK 40A

0080

Chucks

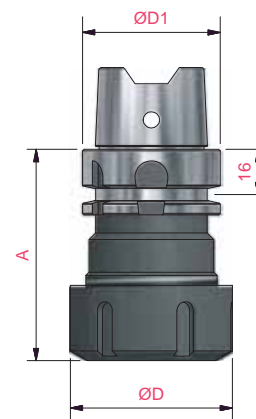
Spannfutter

Mandrins

Mandriles

| Rot | ØD | ØD1 | A | Pinza/Collect | Ghiera/Nut | Part Number |
|-------|----|-----|----|---------------------|-----------------------|-------------|
| DX-RH | 50 | 40 | 65 | Ø2÷20 (ER32) (0070) | DIN 6499 (0077.001.R) | 0080.950.R |

Viene fornito completo di ghiera e controghiera (senza pinza)
Per macchine : "CENTAURO"



Mandrino CNC Cono HSK 63F

0080

Chucks

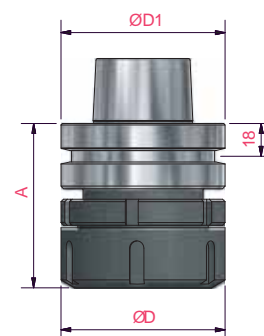
Spannfutter

Mandrins

Mandriles

| Rot | ØD | ØD1 | A | Pinza/Collect | Ghiera/Nut | Part Number |
|-------|----|-----|----|---------------------|-----------------------|-------------|
| DX-RH | 63 | 63 | 71 | Ø2÷30 (ER40) (0071) | DIN 6499 (0077.002.R) | 0080.953.R |

Viene fornito completo di ghiera e controghiera (senza pinza)
Per macchine : "ESSETRE"



Mandrino CNC Cono HSK 63A

0080

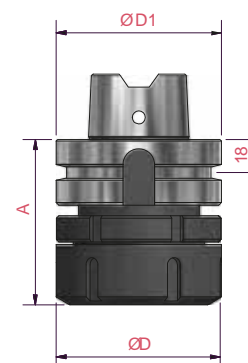
Chucks

Spannfutter

Mandrins

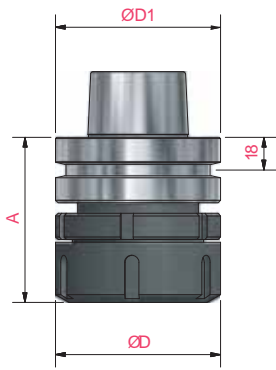
Mandriles

| Rot | ØD | ØD1 | A | Pinza/Collet | Ghiera/Nut | Controghiera | Part Number |
|-------|----|-----|----|---------------------|-----------------------|--------------|-------------|
| DX-RH | 63 | 63 | 71 | Ø2÷30 (ER40) (0071) | DIN 6499 (0077.002.R) | 0078 | 0080.956.R |



0080

Mandrino CNC Cono HSK 63F



Chucks

Spannfutter

Mandrins

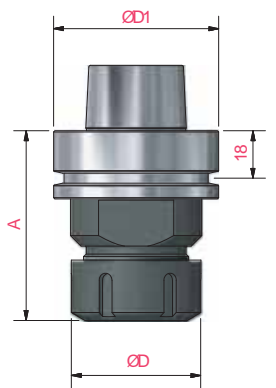
Mandriles

| Rot | ØD | ØD1 | A | Pinza/Collet | Ghiera/Nut | Controghiera | Part Number |
|-------|----|-----|----|---------------------|-----------------------|--------------|-------------|
| DX-RH | 63 | 63 | 79 | Ø2÷30 (ER40) (0071) | DIN 6499 (0077.002.R) | 0078 | 0080.959.R |

Viene fornito completo di ghiera e controghiera (senza pinza) Per macchine : "UNITEAM"

0080

Mandrino CNC Cono HSK Tipo "F"



Chucks

Spannfutter

Mandrins

Mandriles

| Rot | Cono | ØD | ØD1 | A | Pinza/Collet | Ghiera/Nut | Part Number |
|-------|----------|----|-----|-----|----------------------|-------------------------------|-------------|
| DX-RH | HSK 50 F | 50 | 50 | 73 | Ø2÷20 (ER32) (0070) | DIN 6499 (0077.001.R) | 0080.966.R |
| DX-RH | HSK 50 F | 50 | 50 | 76 | Ø2÷20 (ER32) (0070) | DIN 6499 (0077.101.R) c/cusc. | 0080.968.R |
| DX-RH | HSK 50 F | 60 | 50 | 78 | Ø3÷26 (EOC25) (0072) | DIN 6499 (0077.202.R) | 0080.974.R |
| DX-RH | HSK 63 F | 42 | 63 | 70 | Ø3÷16 (ER25) (0067) | DIN 6499 (0077.003.R) | 0080.975.R |
| DX-RH | HSK 63 F | 50 | 63 | 75 | Ø2÷20 (ER32) (0070) | DIN 6499 (0077.001.R) | 0080.976.R |
| SX-LH | HSK 63 F | 50 | 63 | 75 | Ø2÷20 (ER32) (0070) | DIN 6499 (0077.001.L) | 0080.976.L |
| DX-RH | HSK 63 F | 50 | 63 | 76 | Ø2÷20 (ER32) (0070) | DIN 6499 (0077.101.R) c/cusc. | 0080.978.R |
| DX-RH | HSK 63 F | 63 | 63 | 75 | Ø2÷30 (ER40) (0071) | DIN 6499 (0077.002.R) | 0080.980.R |
| SX-LH | HSK 63 F | 63 | 63 | 75 | Ø2÷30 (ER40) (0071) | DIN 6499 (0077.002.L) | 0080.980.L |
| DX-RH | HSK 63 F | 63 | 63 | 78 | Ø2÷30 (ER40) (0071) | DIN 6499 (0077) c/cusc. | 0080.982.R |
| DX-RH | HSK 63 F | 60 | 63 | 78 | Ø3÷26 (EOC25) (0072) | DIN 6499 (0077.202.R) | 0080.983.R |
| DX-RH | HSK 63 F | 60 | 63 | 78 | Ø3÷26 (EOC25) (0072) | DIN 6499 (0077.203.R) c/cusc. | 0080.984.R |
| DX-RH | HSK 63 F | 60 | 63 | 115 | Ø3÷26 (EOC25) (0072) | DIN 6499 (0077.203.R) c/cusc. | 0080.994.R |

Viene fornito completo di ghiera (senza pinza)

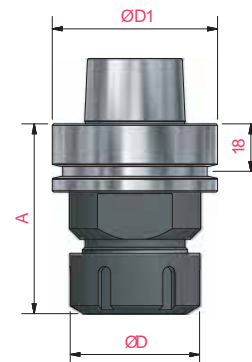
Mandrino CNC Cono HSK 63E

0080

Chucks Spannfutter Mandrins Mandriles

| Rot | ØD | ØD1 | A | Pinza/Collet | Ghiera/Nut | Part Number |
|-------|----|-----|----|----------------------|-----------------------|-------------|
| DX-RH | 50 | 63 | 76 | Ø2÷20 (ER32) (0070) | DIN 6499 (0077.001.R) | 0080.985.R |
| DX-RH | 50 | 63 | 76 | Ø2÷30 (ETS32) (0073) | DIN 6499 (0077.301.R) | 0080.986.R |
| DX-RH | 63 | 63 | 76 | Ø2÷30 (ER40) (0071) | DIN 6499 (0077.002.R) | 0080.987.R |
| DX-RH | 63 | 63 | 76 | Ø4÷25 (ETS40) (0074) | DIN 6499 (0077.302.R) | 0080.988.R |

Viene fornito completo di ghiera (senza pinza)
Per macchine : "UNITEAM"



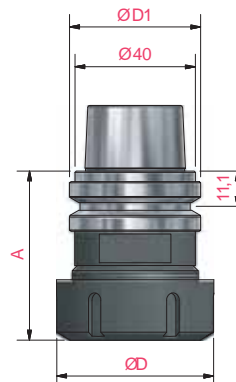
Mandrino CNC Cono HSK 50E 40

0080

Chucks Spannfutter Mandrins Mandriles

| Rot | ØD | ØD1 | A | Pinza/Collet | Ghiera/Nut | Part Number |
|-------|----|-----|----|----------------------|-------------------------------|-------------|
| DX-RH | 60 | 50 | 75 | Ø3÷26 (EOC25) (0072) | DIN 6499 (0077.203.R) c/cusc. | 0080.996.R |

Viene fornito completo di ghiera (senza pinza)



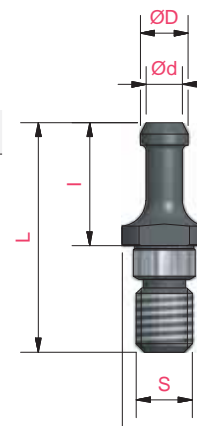
Tiranti per Coni Portautensili

0081.790

Pull Schäfte für Spannfutter Queue pour mandrin Tirante para mandril

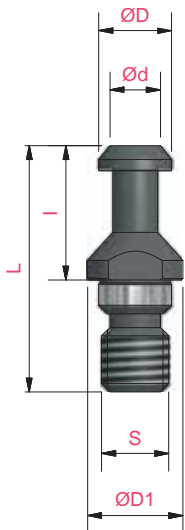
| Tipo/Type | S | Ød | ØD | ØD1 | I | L | DX-RH |
|-----------|-----|-----|-----|-----|----|------|------------|
| ISO 30 | M10 | 6,5 | 8,5 | 15 | 22 | 42,5 | 0081.790.R |

Per macchine - For machines:
"MORBIDELLI - SCM"



0081

Tiranti per Coni Portautensili



Pull

Schäfte für Spannfutter

Queue pour mandrin

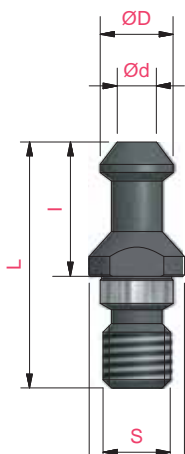
Tirante para mandril

| Tipo/Type | S | Ød | ØD | ØD1 | I | L | DX-RH |
|-----------|-----|----|----|-----|----|----|------------|
| ISO 30 | M10 | 9 | 13 | 17 | 24 | 44 | 0081.791.R |
| ISO 40 | M16 | 14 | 19 | 23 | 26 | 54 | 0081.893.R |

Per macchine - For machines:
 "BUSELLATO - WEEKE - IMA - BULLERI
 MAKI - COSMEC - REICHENBACHER - ELTE "

0081.792

Tiranti per Coni Portautensili



Pull

Schäfte für Spannfutter

Queue pour mandrin

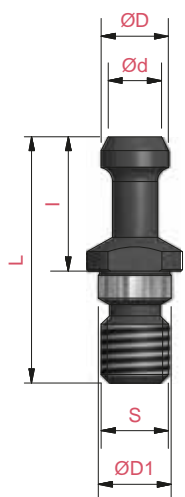
Tirante para mandril

| Tipo/Type | S | Ød | ØD | ØD1 | I | L | DX-RH |
|-----------|-----|----|------|-----|----|----|------------|
| ISO 30 | M12 | 9 | 12,8 | 17 | 24 | 44 | 0081.792.R |

Per macchine - For machines:
 "ALBERTI - VITAP - MASTERWOOD"

0081.793

Tiranti per Coni Portautensili



Pull

Schäfte für Spannfutter

Queue pour mandrin

Tirante para mandril

| Tipo/Type | S | Ød | ØD | ØD1 | I | L | DX-RH |
|-----------|-----|----|----|-----|----|----|------------|
| ISO 30 | M12 | 8 | 12 | 16 | 24 | 44 | 0081.793.R |

Per macchine - For machines:
 "ESSETEAM "

Tiranti per Coni Portautensili

0081.794

Pull

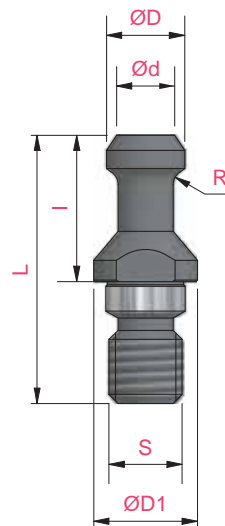
Schäfte für Spannfutter

Queue pour mandrin

Tirante para mandril

| Tipo/Type | S | Ød | ØD | ØD1 | R | I | L | DX-RH |
|-----------|-----|----|------|-----|-----|----|----|------------|
| ISO 30 | M12 | 9 | 12,8 | 17 | 2,4 | 24 | 44 | 0081.794.R |

Per macchine - For machines:
"CMS "



Tiranti per Coni Portautensili

0081.795

Pull

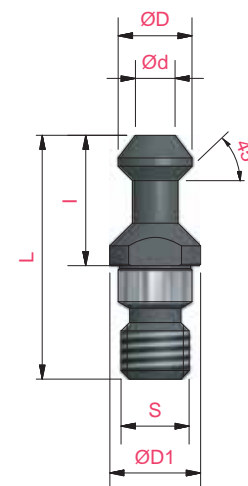
Schäfte für Spannfutter

Queue pour mandrin

Tirante para mandril

| Tipo/Type | S | Ød | ØD | ØD1 | I | L | DX-RH |
|-----------|-----|----|----|-----|----|----|------------|
| ISO 30 | M12 | 9 | 13 | 17 | 23 | 44 | 0081.795.R |

Per macchine - For machines:
"BELOTTI "



Tiranti per Coni Portautensili

0081.890

Pull

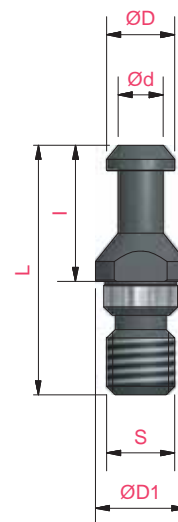
Schäfte für Spannfutter

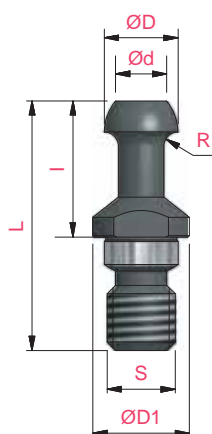
Queue pour mandrin

Tirante para mandril

| Tipo/Type | S | Ød | ØD | ØD1 | I | L | DX-RH |
|-----------|-----|----|----|-----|----|----|------------|
| ISO 30 | M12 | 9 | 13 | 17 | 24 | 44 | 0081.890.R |

Per macchine - For machines:
"BIESSE "



0081.891**Tiranti per Coni Portautensili**

Pull

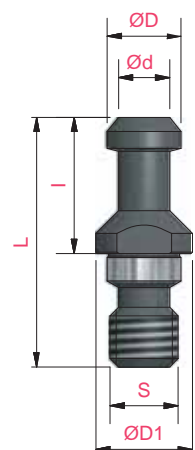
Schäfte für Spannfutter

Queue pour mandrin

Tirante para mandril

| Tipo/Type | S | Ød | ØD | ØD1 | R | I | L | DX-RH |
|-----------|-----|----|----|-----|-----|----|----|------------|
| ISO 30 | M12 | 8 | 12 | 17 | 3,2 | 24 | 44 | 0081.891.R |

| Tipo/Type | S | Ød | ØD | ØD1 | R | I | L | DX-RH |
|-----------|-----|----|----|-----|-----|----|----|------------|
| ISO 30 | M12 | 8 | 12 | 17 | 3,2 | 24 | 44 | 0081.891.R |

Per machine - For machines:**"BIESSE - MASTERWOOD - BULLERI - TERMWOOD"****0081.894****Tiranti per Coni Portautensili**

Pull

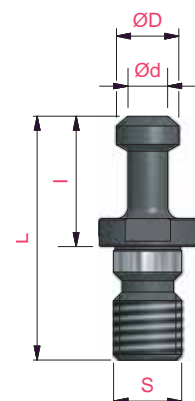
Schäfte für Spannfutter

Queue pour mandrin

Tirante para mandril

| Tipo/Type | S | Ød | ØD | ØD1 | I | L | DX-RH |
|-----------|-----|----|----|-----|----|----|------------|
| BT 30 | M12 | 9 | 13 | 17 | 24 | 44 | 0081.894.R |

| Tipo/Type | S | Ød | ØD | ØD1 | I | L | DX-RH |
|-----------|-----|----|----|-----|----|----|------------|
| BT 30 | M12 | 9 | 13 | 17 | 24 | 44 | 0081.894.R |

Per machine - For machines:**"KOMO"****0081.895****Tiranti per Coni Portautensili**

Pull

Schäfte für Spannfutter

Queue pour mandrin

Tirante para mandril

| Tipo/Type | S | Ød | ØD | I | L | DX-RH |
|-----------|-----|-----|----|------|----|------------|
| BT 30 | M12 | 7 | 11 | 23,5 | 43 | 0081.895.R |
| BT 35 | M12 | 8,5 | 13 | 28 | 48 | 0081.896.R |
| BT 40 | M16 | 10 | 15 | 35 | 60 | 0081.897.R |

| Tipo/Type | S | Ød | ØD | I | L | DX-RH |
|-----------|-----|-----|----|------|----|------------|
| BT 30 | M12 | 7 | 11 | 23,5 | 43 | 0081.895.R |
| BT 35 | M12 | 8,5 | 13 | 28 | 48 | 0081.896.R |
| BT 40 | M16 | 10 | 15 | 35 | 60 | 0081.897.R |

Per machine - For machines:**"BT 30 - BT 40 SHODA - BT 35 HEIAN"**

Pinze ER 32

0070

Collets

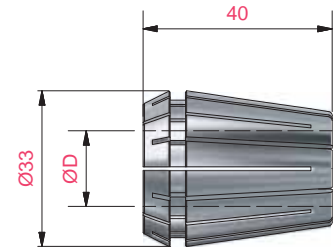
Schäfte für Spannfutter

Pinces

Pinzas

| ØD | Part Number |
|---------------|-------------|
| 2 - 1 | 0070.020 |
| 3 - 2 | 0070.030 |
| 3,2 - (1/8") | 0070.032 |
| 4 - 3 | 0070.040 |
| 4,8 - (3/16") | 0070.048 |
| 5 - 4 | 0001.050 |
| 6 - 5 | 0070.060 |
| 6-4 - (1/4") | 0070.064 |
| 7 - 6 | 0070.070 |
| 7-9 - (5/16") | 0070.079 |
| 8 - 7 | 0070.080 |
| 9 - 8 | 0070.090 |
| 9,5 - (3/8") | 0070.095 |
| 10 - 9 | 0070.100 |

| ØD | Part Number |
|---------------|-------------|
| 11 - 10 | 0070.110 |
| 12 - 11 | 0070.120 |
| 12,7 - (1/2") | 0070.127 |
| 13 - 12 | 0070.130 |
| 14 - 13 | 0070.140 |
| 15 - 14 | 0070.150 |
| 15,9 - (5/8") | 0070.159 |
| 16 - 15 | 0070.160 |
| 17 - 16 | 0070.170 |
| 18 - 17 | 0070.180 |
| 19 - 18 | 0070.190 |
| 19,1 - 3/4") | 0070.191 |
| 20 - 19 | 0070.200 |



Pinze ER 40

0071

Collets

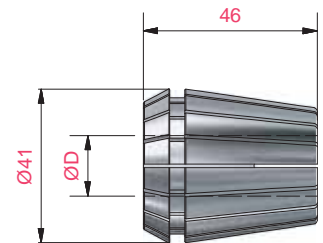
Schäfte für Spannfutter

Pinces

Pinzas

| ØD | Part Number |
|---------------|-------------|
| 3 - 2 | 0071.030 |
| 4 - 3 | 0071.040 |
| 4,8 - (3/16") | 0071.048 |
| 5 - 4 | 0071.050 |
| 6 - 5 | 0071.060 |
| 6-4 - (1/4") | 0071.064 |
| 7 - 6 | 0071.070 |
| 7-9 - (5/16") | 0071.079 |
| 8 - 7 | 0071.080 |
| 9 - 8 | 0071.090 |
| 9,5 - (3/8") | 0071.095 |
| 10 - 9 | 0071.100 |
| 11 - 10 | 0071.110 |
| 12 - 11 | 0071.120 |
| 12,7 - (1/2") | 0071.127 |
| 13 - 12 | 0071.130 |
| 14 - 13 | 0071.140 |

| ØD | Part Number |
|---------------|-------------|
| 15 - 14 | 0071.150 |
| 15,9 - (5/8") | 0071.159 |
| 16 - 15 | 0071.160 |
| 17 - 16 | 0071.170 |
| 18 - 17 | 0071.180 |
| 19 - 18 | 0071.190 |
| 19,1 - 3/4") | 0071.191 |
| 20 - 19 | 0071.200 |
| 21 - 20 | 0071.210 |
| 22 - 21 | 0071.220 |
| 23 - 22 | 0071.230 |
| 24 - 23 | 0071.240 |
| 25 - 24 | 0071.250 |
| 25,4 - (1") | 0071.254 |
| 26 - 25 | 0071.260 |
| 28 - 27 | 0071.280 |
| 30 - 29 | 0071.300 |



0072

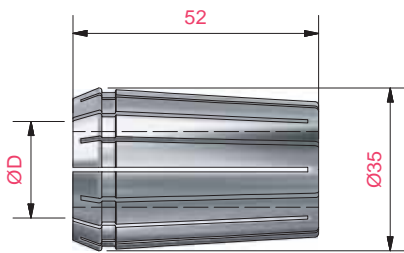
Pinze EOC 25

Collets

Schäfte für Spannfutter

Pincos

Pinzas



| ØD | Part Number | ØD | Part Number |
|--------------|-------------|--------------------|-------------|
| 2 - 1,5 | 0072.020 | 12 - 11,5 | 0072.120 |
| 3 - 2,5 | 0072.030 | 13 - 12,5 - (1/2") | 0072.130 |
| 4 - 3,5 | 0072.040 | 14 - 13,5 | 0072.140 |
| 5 - 4,5 | 0072.050 | 15,9 - (5/8") | 0072.159 |
| 6 - 5,5 | 0072.060 | 16 - 15,5 | 0072.160 |
| 6-4 - (1/4") | 0072.064 | 18 - 17,5 | 0072.180 |
| 7 - 6,5 | 0072.070 | 19,1 - (3/4") | 0072.191 |
| 8 - 7,5 | 0072.080 | 20 - 19,5 | 0072.200 |
| 9,5 - (3/8") | 0072.095 | 22 - 21,5 | 0072.220 |
| 10 - 9,5 | 0072.100 | 25 - 24,5 | 0072.250 |
| 11 - 10,5 | 0072.110 | 25,4 - (1") | 0072.254 |

0067

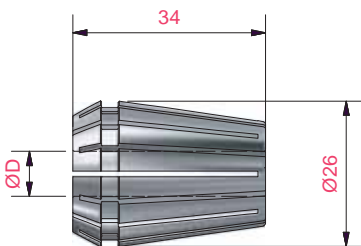
Pinze ER 25

Collets

Schäfte für Spannfutter

Pincos

Pinzas



| ØD | Part Number | ØD | Part Number |
|---------------|-------------|---------------|-------------|
| 3 - 2 | 0067.030 | 9,5 - (3/8") | 0067.095 |
| 3,2 - (1/8") | 0067.032 | 10 - 9 | 0067.100 |
| 4 - 3 | 0067.040 | 11 - 10 | 0067.110 |
| 4,8 - (3/16") | 0067.048 | 12 - 11 | 0067.120 |
| 5 - 4 | 0067.050 | 12,7 - (1/2") | 0067.127 |
| 6 - 5 | 0067.060 | 13 - 12 | 0067.130 |
| 6-4 - (1/4") | 0067.064 | 14 - 13 | 0067.140 |
| 7 - 6 | 0067.070 | 15 - 14 | 0067.150 |
| 7-9 - (5/16") | 0067.079 | 15,9 - (5/8") | 0067.159 |
| 8 - 7 | 0067.080 | 16 - 15 | 0067.160 |
| 9 - 8 | 0067.090 | | |

0068

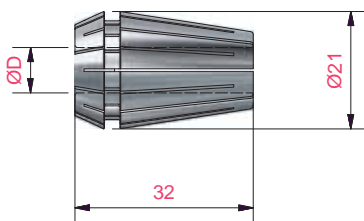
Pinze ER 20

Collets

Schäfte für Spannfutter

Pincos

Pinzas



| ØD | Part Number | ØD | Part Number |
|--------------|-------------|---------------|-------------|
| 3 - 2 | 0068.030 | 9,5 - (3/8") | 0068.095 |
| 3,2 - (1/8") | 0068.032 | 10 - 9 | 0068.100 |
| 4 - 3 | 0068.040 | 11 - 10 | 0068.110 |
| 5 - 4 | 0068.050 | 12 - 11 | 0068.120 |
| 6 - 5 | 0068.060 | 12,7 - (1/2") | 0068.127 |
| 6-4 - (1/4") | 0068.064 | 13 - 12 | 0068.130 |
| 8 - 7 | 0068.080 | | |
| 9 - 8 | 0068.090 | | |

Pinze ER 16

0069

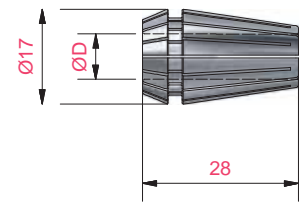
Collets

Schäfte für Spannfutter

Pinces

Pinzas

| ØD | Part Number | ØD | Part Number |
|--------------|-------------|--------------|-------------|
| 2 - 1 | 0069.020 | 6-4 - (1/4") | 0069.064 |
| 3 - 2 | 0069.030 | 7 - 6 | 0069.070 |
| 3,2 - (1/8") | 0069.032 | 8 - 7 | 0069.080 |
| 4 - 3 | 0069.040 | 9 - 8 | 0069.090 |
| 5 - 4 | 0069.050 | 9,5 - (3/8") | 0069.095 |
| 6 - 5 | 0069.060 | 10 - 9 | 0069.100 |



Pinze ETS 32

0073

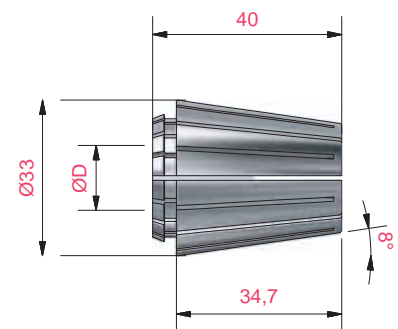
Collets

Schäfte für Spannfutter

Pinces

Pinzas

| ØD | Part Number | ØD | Part Number |
|--------|-------------|---------|-------------|
| 3 - 2 | 0073.030 | 12 - 11 | 0073.120 |
| 4 - 3 | 0073.040 | 13 - 12 | 0073.130 |
| 5 - 4 | 0073.050 | 14 - 13 | 0073.140 |
| 6 - 5 | 0073.060 | 16 - 15 | 0073.160 |
| 7 - 6 | 0073.070 | 18 - 17 | 0073.180 |
| 8 - 7 | 0073.080 | 20 - 19 | 0073.200 |
| 10 - 9 | 0073.100 | | |



Pinze ETS 40

0074

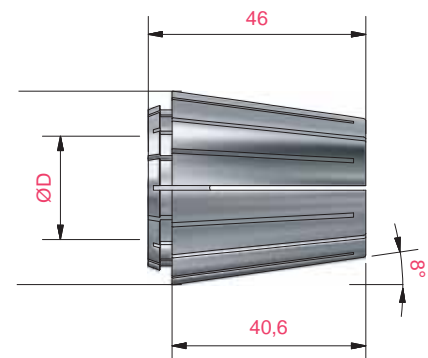
Collets

Schäfte für Spannfutter

Pinces

Pinzas

| ØD | Part Number | ØD | Part Number |
|---------|-------------|---------|-------------|
| 4 - 3 | 0074 | 12 - 11 | 0073.120 |
| 5 - 4 | 0074 | 13 - 12 | 0073.130 |
| 6 - 5 | 0074 | 14 - 13 | 0073.140 |
| 7 - 6 | 0074 | 16 - 15 | 0073.160 |
| 8 - 7 | 0074 | 18 - 17 | 0073.180 |
| 10 - 9 | 0074 | 20 - 19 | 0073.200 |
| 12 - 11 | 0074 | | |



0077

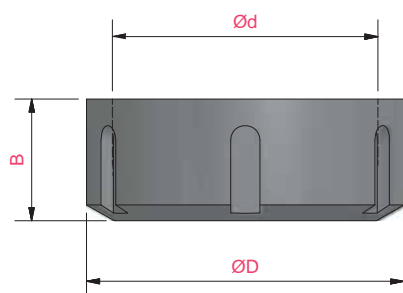
Ghiera

Lock Nut

Nutmutter

Ecrans

Tuercas



| ØD | B | Ød | Tipo/Type | Dx | Sx |
|----|----|-----------|---------------------------------------|------------|------------|
| 42 | 20 | M32 x 1,5 | Per Pinza ER 25 | 0077.003.R | |
| 50 | 23 | M40 x 1,5 | Per Pinza ER 32 | 0077.001.R | 0077.001.L |
| 63 | 25 | M50 x 1,5 | Per Pinza ER 40 | 0077.002.R | 0077.002.L |
| 50 | 23 | M40 x 1,5 | Per Pinza ER 32 c/cuscinetto | 0077.101.R | |
| 63 | 25 | M50 x 1,5 | Per Pinza ER 40 c/cuscinetto | 0077.102.R | |
| 60 | 30 | M48 x 2 | Per Pinza DIN 6388 EOC25 | 0077.202.R | 0077.202.L |
| 60 | 30 | M48 x 2 | Per Pinza DIN 6388 EOC25 c/cuscinetto | 0077.203.R | |
| 50 | 23 | M40 x 1,5 | Per Pinza ETS 32 | 0077.301.R | |
| 63 | 50 | M50 x 1,5 | Per Pinza ETS 40 | 0077.302.R | |

0078

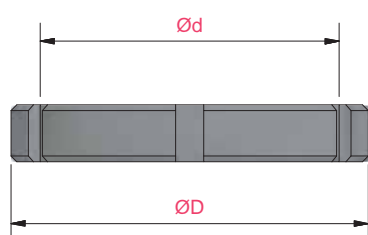
Ghiera

Nut

Nutmutter

Ecrans

Tuercas



| ØD | B | Ød | Dx |
|----|----|-----------|------------|
| 63 | 10 | M50 x 1,5 | 0078.000.R |

Per Art. 0080.953 - 0080.956 - 0080.959